

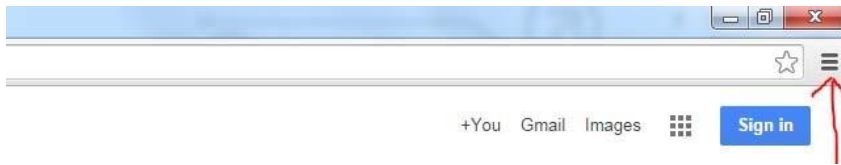
In order for the following site, <https://support.fafco.com>, to work properly you must have the following prerequisites.

- 1) Have <https://support.fafco.com> added to the trusted sites list.
- 2) Allow Popups for <https://support.fafco.com>
- 3) Allow JavaScript to run for <https://support.fafco.com>
- 4) Enable cookies for <https://support.fafco.com>

Here is how you get started.

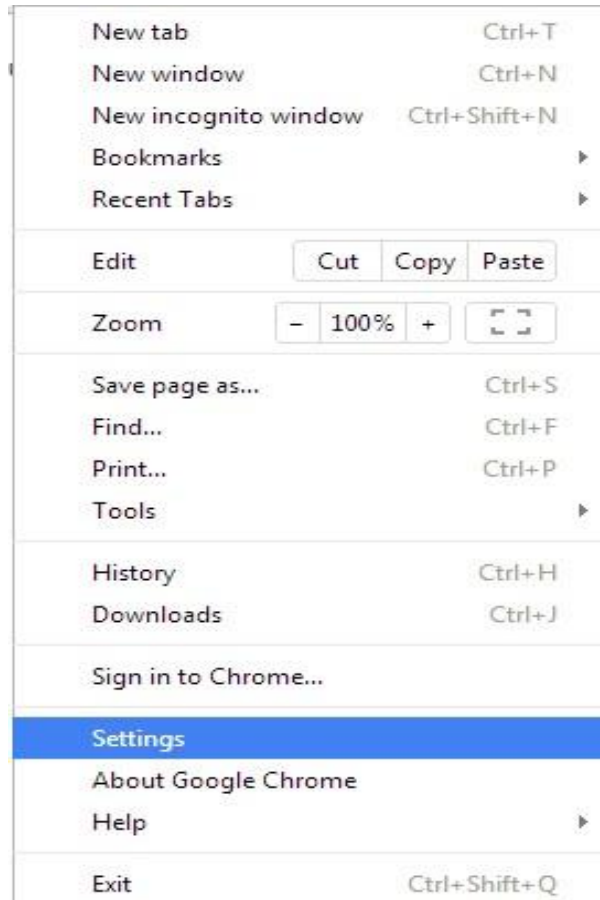
## **Add <https://support.fafco.com> To Trusted Sites List**

1. Open Google Chrome. **Start >> All Programs >> Google Chrome**
2. In Google Chrome, click on the icon with 3 lines on the far right hand side of the address bar.



3. Click on Settings.

4. Click on



**Show Advanced Settings**

## 5. Click on

# Settings

Search settings

## Sign in

Sign in to Google Chrome with your Google Account to save your personalized browser features to the web and access them from Google Chrome on any computer. You'll also be automatically signed in to your favorite Google services. [Learn more](#)

Sign in to Chrome

## On startup

- Open the New Tab page
- Continue where you left off
- Open a specific page or set of pages. [Set pages](#)

## Appearance

Get themes    Reset to default theme

- Show Home button
- Always show the bookmarks bar

## Search

Set which search engine is used when searching from the [omnibox](#).

Google    Manage search engines...

## Users

You are currently the only Google Chrome user.

Add new user...    Delete this user    Import bookmarks and settings...

## Default browser

The default browser is currently Google Chrome.

Show advanced settings...

**Change proxy settings.**

## 6. Click on

The image shows a screenshot of the Chrome Settings application. At the top, there is a 'Settings' title and a search bar. Below the title are three buttons: 'Add new user...', 'Delete this user', and 'Import bookmarks and settings...'. The 'Default browser' section indicates that Google Chrome is the current default. The 'Privacy' section contains two buttons: 'Content settings...' and 'Clear browsing data...'. Below these are several checkboxes for various privacy features, most of which are checked. The 'Passwords and forms' section has two checked options for Autofill and saving passwords. The 'Web content' section shows font size set to 'Medium' and page zoom at '100%'. The 'Network' section is highlighted in yellow and contains the text 'Google Chrome is using your computer's system proxy settings to connect to the network.' Below this text is a button labeled 'Change proxy settings...'. Three red arrows point to this button from the left, right, and bottom. Below the screenshot, the text 'the Security tab.' is written.

Settings Search s

Add new user... Delete this user Import bookmarks and settings...

### Default browser

The default browser is currently Google Chrome.

### Privacy

Content settings... Clear browsing data...

Google Chrome may use web services to improve your browsing experience. You may optionally disable these services. [Learn more](#)

- Use a web service to help resolve navigation errors
- Use a prediction service to help complete searches and URLs typed in the address bar or the app launcher search box
- Predict network actions to improve page load performance
- Automatically report details of possible security incidents to Google
- Enable phishing and malware protection
- Use a web service to help resolve spelling errors
- Automatically send usage statistics and crash reports to Google
- Send a "Do Not Track" request with your browsing traffic
- Enable "Ok Google" to start a voice search ⚠

### Passwords and forms

- Enable Autofill to fill out web forms in a single click. [Manage Autofill settings](#)
- Offer to save your web passwords. [Manage passwords](#)

### Web content

Font size: Medium [Customize fonts...](#)

Page zoom: 100%

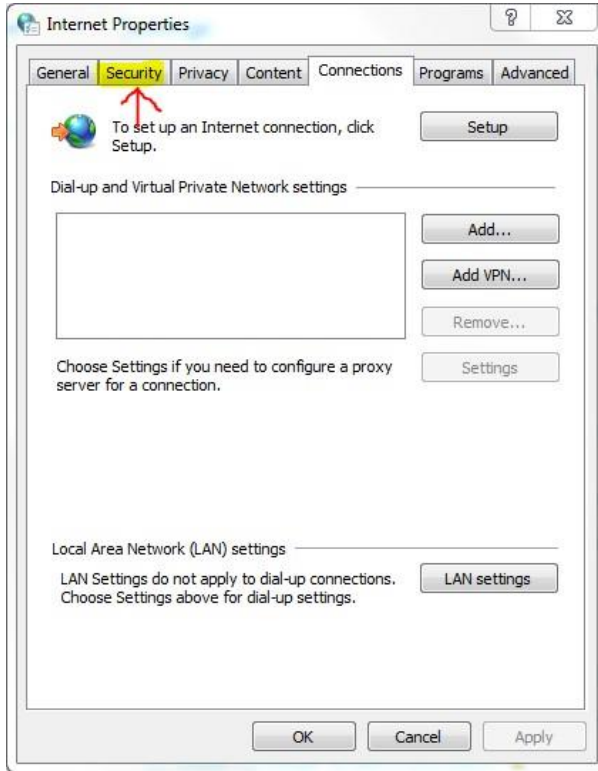
### Network

Google Chrome is using your computer's system proxy settings to connect to the network.

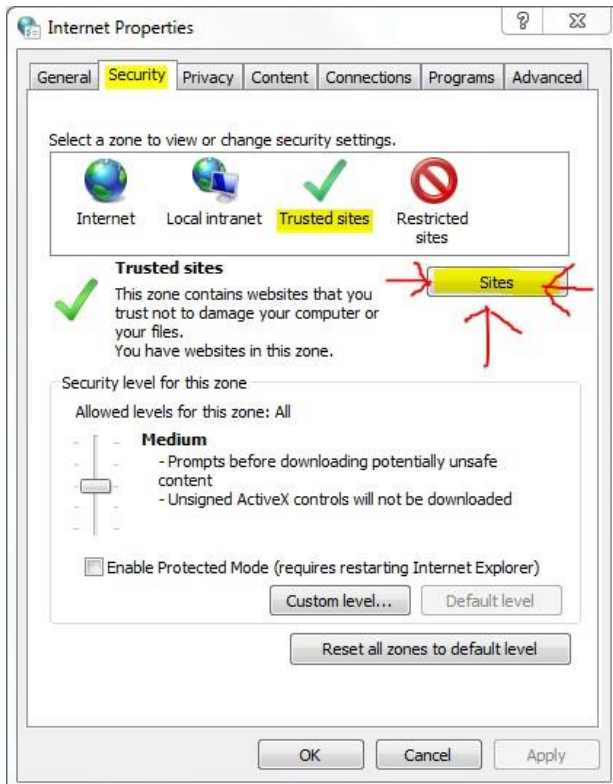
[Change proxy settings...](#)

the **Security** tab.

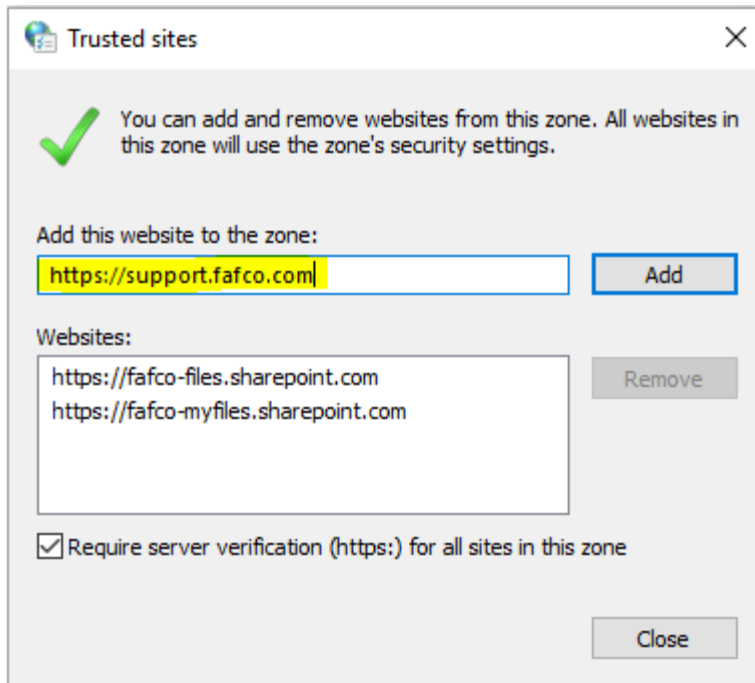
7. Click on



7. Click on **Trusted Sites**, which is identified by the green check mark, then click on the **Sites** button.



8. Type in the following URL to add. **https://support.fafco.com**

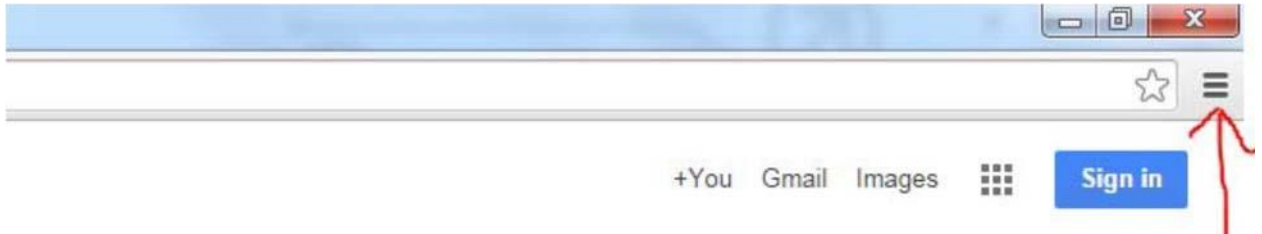


9. Click the **Add** button. Click the **Close** button. Click the **OK** button

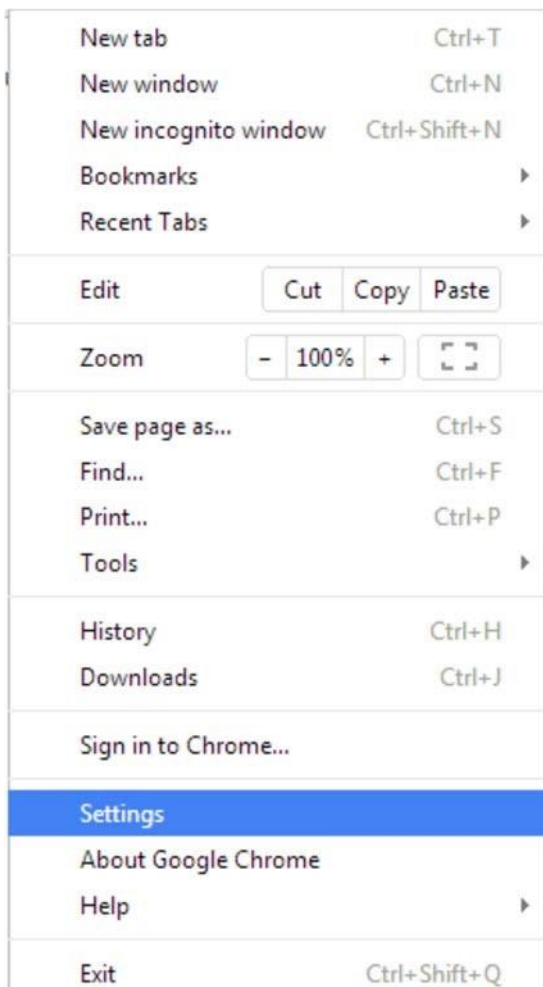
10. Done.

## Allow Popups for <https://support.fafco.com>

1. Click the Chrome menu  on the browser toolbar.



2. Select **Settings**.



3. Click **Show advanced settings**.

# Settings

Search settings

## Sign in

Sign in to Google Chrome with your Google Account to save your personalized browser features to the web and access them from Google Chrome on any computer. You'll also be automatically signed in to your favorite Google services. [Learn more](#)

Sign in to Chrome

## On startup

- Open the New Tab page
- Continue where you left off
- Open a specific page or set of pages. [Set pages](#)

## Appearance

Get themes    Reset to default theme

- Show Home button
- Always show the bookmarks bar

## Search

Set which search engine is used when searching from the [omnibox](#).

Google    Manage search engines...

## Users

You are currently the only Google Chrome user.

Add new user...    Delete this user    Import bookmarks and settings...

## Default browser

The default browser is currently Google Chrome.



4. In the "Privacy" section, click the **Content settings** button.



### Search

Set which search engine is used when searching from the [omnibox](#).

Google ▾ Manage search engines...

### Users

You are currently the only Google Chrome user.

Add new user... Delete this user Import bookmarks and settings...

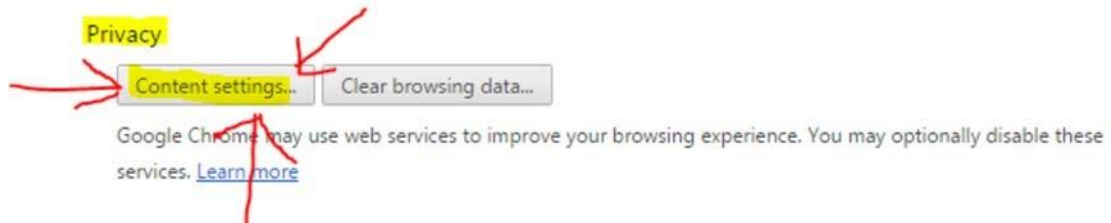
### Default browser

The default browser is currently Google Chrome.

**Privacy**

Content settings... Clear browsing data...

Google Chrome may use web services to improve your browsing experience. You may optionally disable these services. [Learn more](#)



5. In the "Pop-ups" section, click Manage exceptions.

**Pop-ups**

Allow all sites to show pop-ups

Do not allow any site to show pop-ups (recommended)

Manage exceptions...



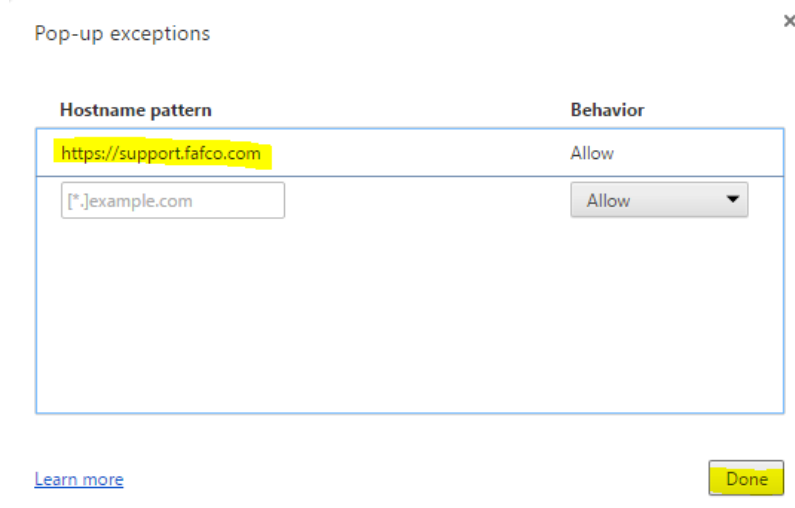
6. Add the following URL under the "Hostname pattern" and select the "Allow" behavior.

<https://support.fafco.com>

Pop-up exceptions ×

Hostname pattern	Behavior
<a href="https://support.fafco.com">https://support.fafco.com</a>	Allow
<input type="text" value="[*].example.com"/>	Allow ▾

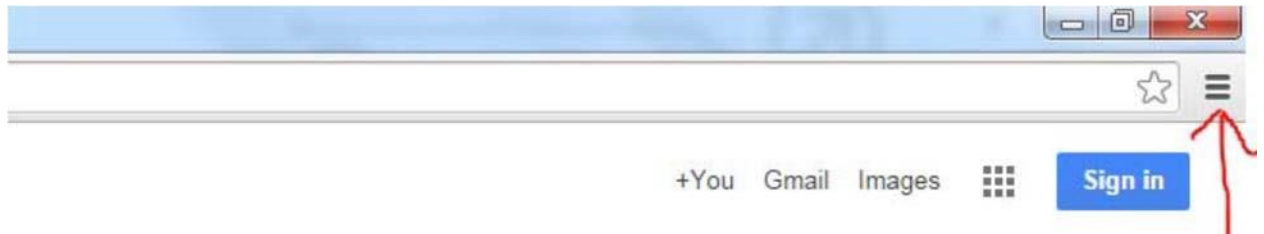
[Learn more](#) Done



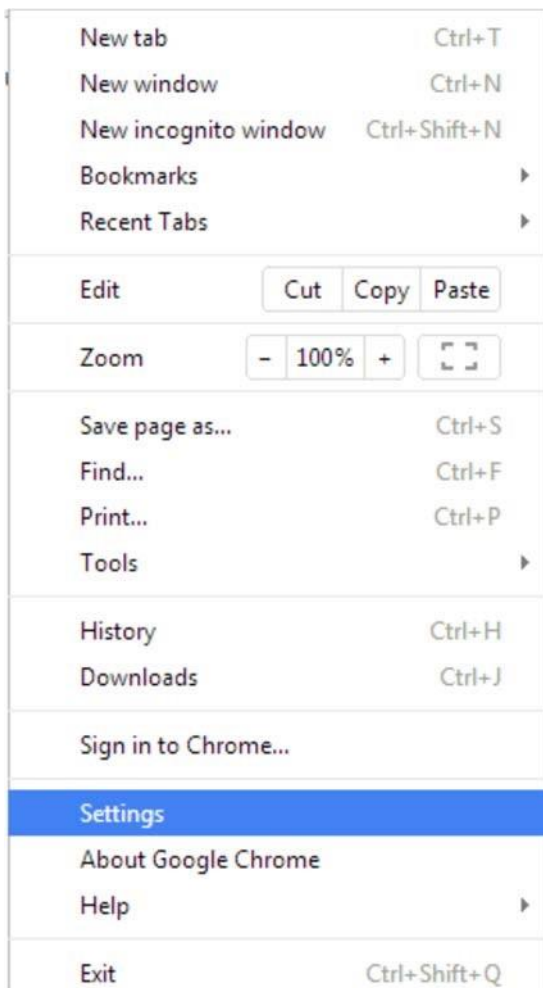
7. Done.

## Allow JavaScript to run for <https://support.fafco.com>

1. Click the menu icon  on the browser toolbar.



2. Select **Settings**.



3. Click the **Show advanced settings**.

# Settings

Search settings

## Sign in

Sign in to Google Chrome with your Google Account to save your personalized browser features to the web and access them from Google Chrome on any computer. You'll also be automatically signed in to your favorite Google services. [Learn more](#)

Sign in to Chrome

## On startup

- Open the New Tab page
- Continue where you left off
- Open a specific page or set of pages. [Set pages](#)

## Appearance

Get themes    Reset to default theme

- Show Home button
- Always show the bookmarks bar

## Search

Set which search engine is used when searching from the [omnibox](#).

Google ▼    Manage search engines...

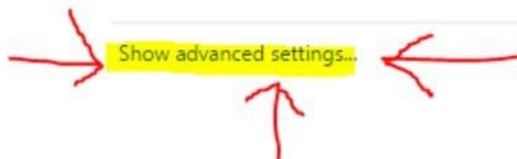
## Users

You are currently the only Google Chrome user.

Add new user...    Delete this user    Import bookmarks and settings...

## Default browser

The default browser is currently Google Chrome.



4. Click **Content Settings** in the **'Privacy** section.'

## Search

Set which search engine is used when searching from the [omnibox](#).

Google ▼ Manage search engines...

## Users

You are currently the only Google Chrome user.

Add new user... Delete this user Import bookmarks and settings...

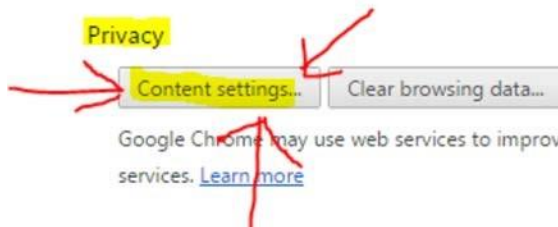
## Default browser

The default browser is currently Google Chrome.

Privacy

Content settings... Clear browsing data...

Google Chrome may use web services to improve your browsing experience. You may optionally disable these services. [Learn more](#)



5. In the 'JavaScript' section, click Manage exceptions.

## JavaScript

- Allow all sites to run JavaScript (recommended)
- Do not allow any site to run JavaScript

Manage exceptions...

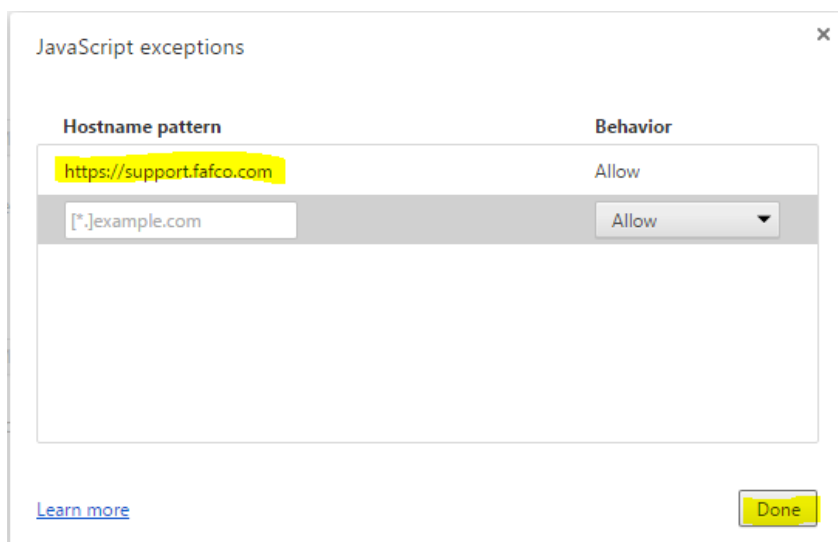
6. Add the following URL under the "Hostname pattern" and select the "Allow" behavior.

<https://support.fafco.com>

JavaScript exceptions

Hostname pattern	Behavior
https://support.fafco.com	Allow
[*.]example.com	Allow ▼

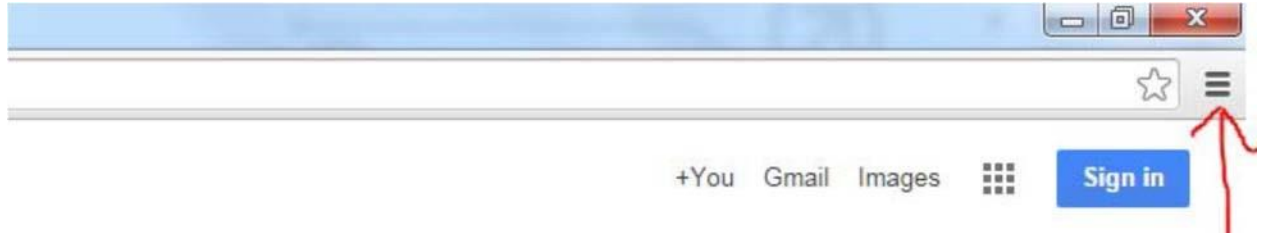
[Learn more](#) Done



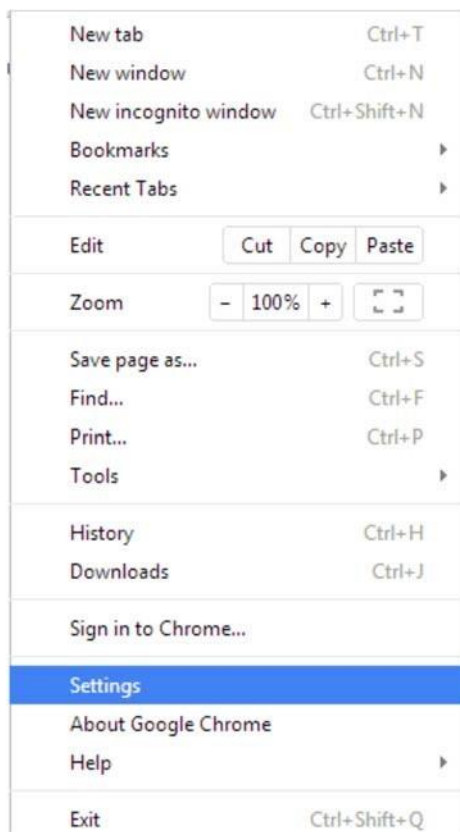
7. Done.

## Enable cookies for <https://support.fafco.com>

1. Click the Chrome menu icon .



2. Select **Settings**.



3. Near the bottom of the page, click **Show advanced settings**.

# Settings

Search settings

## Sign in

Sign in to Google Chrome with your Google Account to save your personalized browser features to the web and access them from Google Chrome on any computer. You'll also be automatically signed in to your favorite Google services. [Learn more](#)

Sign in to Chrome

## On startup

- Open the New Tab page
- Continue where you left off
- Open a specific page or set of pages. [Set pages](#)

## Appearance

Get themes    Reset to default theme

- Show Home button
- Always show the bookmarks bar

## Search

Set which search engine is used when searching from the [omnibox](#).

Google ▼    Manage search engines...

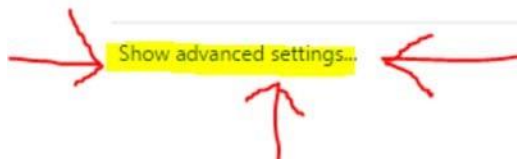
## Users

You are currently the only Google Chrome user.

Add new user...    Delete this user    Import bookmarks and settings...

## Default browser

The default browser is currently Google Chrome.



4. In the "Privacy" section, click **Content settings**.

## Search

Set which search engine is used when searching from the [omnibox](#).

Google ▼ Manage search engines...

## Users

You are currently the only Google Chrome user.

Add new user... Delete this user Import bookmarks and settings...

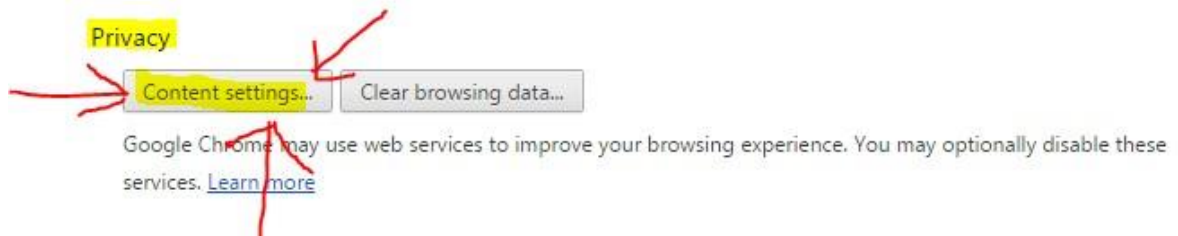
## Default browser

The default browser is currently Google Chrome.

Privacy

Content settings... Clear browsing data...

Google Chrome may use web services to improve your browsing experience. You may optionally disable these services. [Learn more](#)



5. Enable cookies:

- o To enable cookies, select **Allow local data to be set**.

## Content settings

### Cookies

- Allow local data to be set (recommended)
- Keep local data only until you quit your browser
- Block sites from setting any data
- Block third-party cookies and site data

Manage exceptions... All cookies and site data...

## Images

- Show all images (recommended)
- Do not show any images

Manage exceptions...

6. Click **Done** to save.